

Product Data Sheet

DIN 41612 High power contact for type M,
Part No. 916-61002

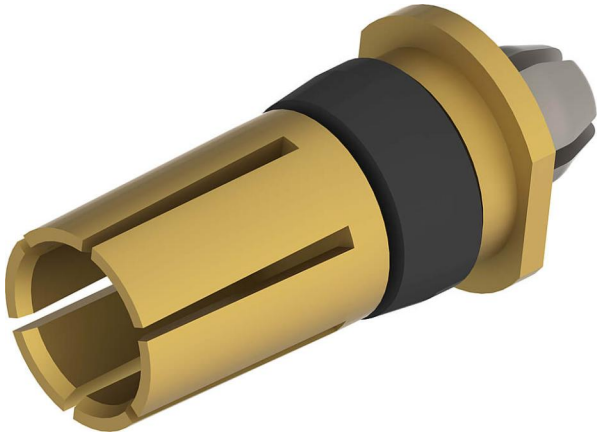


Illustration similar



Power

- Termination length 2.9 mm
- for female connector type M
- Press-fit
- performance level 2



» to product on www.ept.de



» to product group [DIN 41612](#)

Product Data Sheet

DIN 41612 High power contact for type M,
Part No. 916-61002



Technical Specifications

Basics

Specification	IEC 60603-2 (DIN 41612)
Performance Level	2
Termination Technology	Press-fit
Termination Length	2.9 mm
Operating Temperature Range	-55°C to +125°C

Material

Contact Material	Copper alloy
------------------	--------------

Mechanical

Durability	400 mating cycles
------------	-------------------

Electrical

Operational Current	30 A
---------------------	------

Approval / Compliance

Environment	RoHS compliant
-------------	----------------

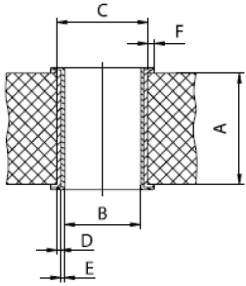
Product Data Sheet

DIN 41612 High power contact for type M,
Part No. 916-61002



Hole Specifications

Plated through-hole according to IEC 60352-5



Material	HAL Sn printed circuit boards
Nominal Hole	Ø 2.85 mm
A PCB Thickness	min. 2.00 mm
B Plated Hole	Ø 2.85 + 0.10 / -0.05 mm
C Drill Hole	3.00 ± 0.02 mm
D Cu Plating	min. 25 µm
E Surface	HAL Sn, 5 - 15 µm
F Annular Ring	min. 0.5 mm

Product Data Sheet

DIN 41612 High power contact for type M,
Part No. 916-61002



Drawings

Component data in 2D and 3D format you can download here:

[» PDF](#)