

# Product Data Sheet

hm2.0 Female connector, type L,  
Part No. 244-51000

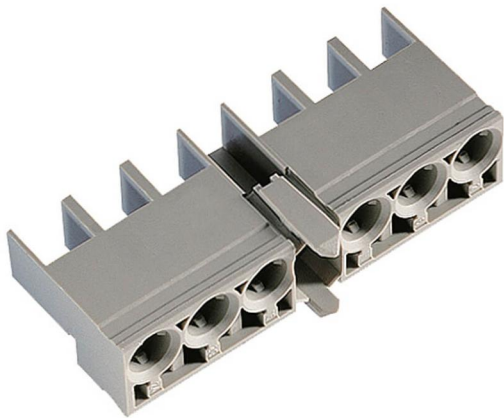


Illustration similar



Perpendicular



Press-fit



Power

- for PCB  $\geq 1.44$  mm
- tested according to IEC 61076-4-101



» to product on [www.ept.de](http://www.ept.de)



» to product group hm 2.0

# Product Data Sheet

hm2.0 Female connector, type L,  
Part No. 244-51000



---

## Technical Specifications

### Basics

---

Specification	IEC 61076-4-101
Operating Temperature Range	-55°C to +125°C

### Material

---

Insulator Material	PBT glass filled, UL 94 V-0
CTI value <i>IEC 60112</i>	200

### Approval / Compliance

---

UL file	E130314
Environment	RoHS compliant

# Product Data Sheet

hm2.0 Female connector, type L,  
Part No. 244-51000

---



## Accessories

» hm2.0 Coding key female connector  
Part Number 244-8031

» hm2.0 Coding key female connector  
Part Number 244-8014

## Drawings

Component data in 2D and 3D format you can download here:

» [PDF](#)