

# Product Data Sheet

DIN 41612 Switching connector,  
Part No. 104-65465-xx

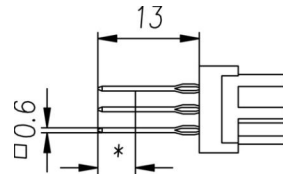
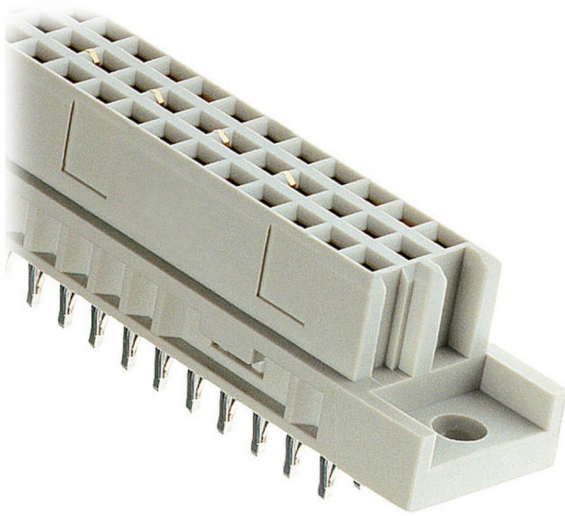


Illustration similar



Parallel



Perpendicular



Press-fit



Rugged

- Switching contacts at position a21 - a22, b4 - b5, b6 - b7, b8 - b9, b10 - b11 für VME
- 96 contacts
- PCB 1.5 to 2.0 mm: xx = 01\_PCB 2.0 to 2.8 mm: xx = 02 (on request)\_PCB > 2.8 mm: xx = 03
- Press-fit
- Performance level 2
- Termination length 13 mm\_ with plug-in zone in performance level 2



» to product on [www.ept.de](http://www.ept.de)



» to product group DIN 41612

# Product Data Sheet

DIN 41612 Switching connector,  
Part No. 104-65465-xx



## Technical Specifications

### Basics

|                             |                         |
|-----------------------------|-------------------------|
| Specification               | IEC 60603-2 (DIN 41612) |
| Performance Level           | 2                       |
| No. of Contacts             | 96                      |
| Termination Technology      | Press-fit               |
| Termination Length          | 13 mm                   |
| Board-to-Board Distance     | 16.85 mm                |
| Operating Temperature Range | -55°C to +125°C         |

### Material

|                               |                            |
|-------------------------------|----------------------------|
| Insulator Material            | PBT glass filled UL 94 V-0 |
| CTI value<br><i>IEC 60112</i> | 200                        |
| Contact Material              | Copper alloy               |

### Mechanical

|                          |                   |
|--------------------------|-------------------|
| Pitch                    | 2.54 mm           |
| Mating Force             | < 90 N            |
| Separating Force per Pin | > 0.15 N          |
| Durability               | 400 mating cycles |

### Electrical

|                        |                      |
|------------------------|----------------------|
| Operational Current    | 1.5 A                |
| Contact Resistance     | < 20 mΩ              |
| Clearance and Creepage | ≥ 1.2 mm             |
| Insulation Resistance  | > 10 <sup>6</sup> MΩ |
| Test Voltage           | 1000 V               |

### Approval / Compliance

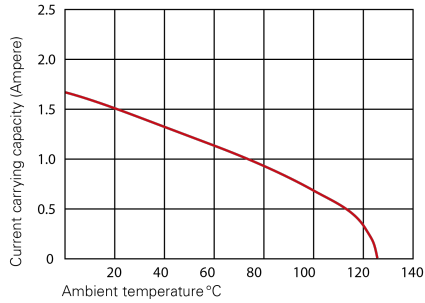
|             |                |
|-------------|----------------|
| UL file     | E130314        |
| Environment | RoHS compliant |

# Product Data Sheet

DIN 41612 Switching connector,  
Part No. 104-65465-xx



## Derating Diagram



### Type B, Q, C, R

|       |       |
|-------|-------|
| 20°C  | 1.5 A |
| 70°C  | 1.1 A |
| 100°C | 0.7 A |

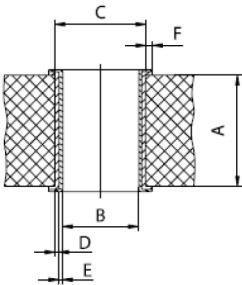
# Product Data Sheet

DIN 41612 Switching connector,  
Part No. 104-65465-xx



## Hole Specifications

Plated through-hole according to IEC 60352-5



| Material               | imm. Sn printed circuit boards |
|------------------------|--------------------------------|
| <b>Nominal Hole</b>    | <b>Ø 1.0 mm</b>                |
| <b>A PCB Thickness</b> | min 1.44 mm                    |
| <b>B Plated Hole</b>   | Ø 1.0 +0.09 / -0.06 mm         |
| <b>C Drill Hole</b>    | 1.15 ±0.025 mm                 |
| <b>D Cu Plating</b>    | min. 25 µm                     |
| <b>E Surface</b>       | imm. Sn plating, max. 1.5 µm   |
| <b>F Annular Ring</b>  | min. 0.1 mm                    |

| Material               | pure Cu printed circuit boards                 |
|------------------------|--|
| <b>Nominal Hole</b>    | <b>Ø 1.0 mm</b>                                |
| <b>A PCB Thickness</b> | min 1.44 mm                                    |
| <b>B Plated Hole</b>   | Ø 1.0 +0.09 / -0.06 mm                         |
| <b>C Drill Hole</b>    | 1.15 ±0.025 mm                                 |
| <b>D Cu Plating</b>    | min. 25 µm                                     |
| <b>E Surface</b>       | OSP, z.B. GLICOAT-SMD (F2) with 0.12 - 0.15 µm |
| <b>F Annular Ring</b>  | min. 0.1 mm                                    |

| Material               | HAL Sn printed circuit boards |
|------------------------|-------------------------------|
| <b>Nominal Hole</b>    | <b>Ø 1.0 mm</b>               |
| <b>A PCB Thickness</b> | min 1.44 mm                   |
| <b>B Plated Hole</b>   | Ø 1.0 +0.09 / -0.06 mm        |
| <b>C Drill Hole</b>    | 1.15 ±0.025 mm                |
| <b>D Cu Plating</b>    | min. 25 µm                    |
| <b>E Surface</b>       | HAL Sn, 5 - 15 µm             |
| <b>F Annular Ring</b>  | min. 0.1 mm                   |

# Product Data Sheet

DIN 41612 Switching connector,  
Part No. 104-65465-xx

---



## Modifications

Available on request

- Without flange
- Special contact length
- Performance levels I + III or customer-specific
- Contact arrangement

## Accessories

- » DIN 41612 Coding type B and C  
Part Number 104-19003

## Drawings

Component data for this product you can request through [sales@ept.de](mailto:sales@ept.de)